



Epson 2100 Continuous Ink System

Installation Instructions

Note: Ensure that you read this document before attempting to install the Lyson CIS System. Installing inks into this CIS system will be taken as an acceptance of the terms and conditions hereunder. Failure to follow these instructions may result in damage to your printer and the voiding of the CIS warranty.

DISCLAIMER

As Lyson bulk feeds are self installed by the user, Lyson is not responsible for any damages to your printer, whether they are or are not related to the Lyson Bulk ink feed system. Please contact the store or dealer where the printer was purchased, or the printer manufacturer for any problems or questions related to the printer and its operation. If the Customer chooses to use ink in the system from a manufacturer other than Lyson, and is not satisfied with that ink, or it clogs the printer or the bulk feed system, it will be the Customers responsibility to pay for the parts to repair the system and restore it to normal usage.

WARRANTY

Lyson CIS systems are warranted to be free from manufacturing defects for the period of six months from date of system purchase. CIS cartridges are warranted for the period of 3 months from date of system purchase.

RETURNS POLICY

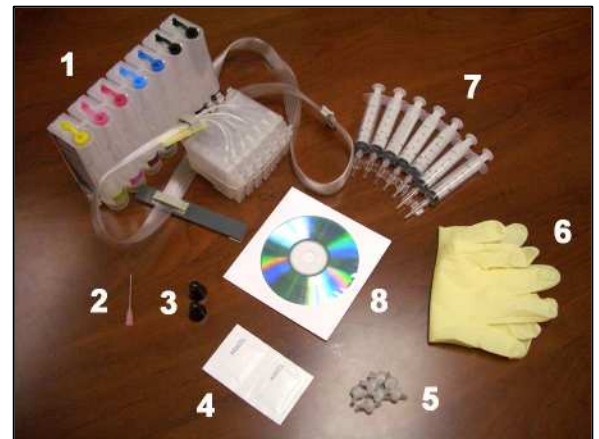
We can only guarantee that the Lyson Bulk ink system will deliver Lyson ink just as well as a normal ink cartridge. We will not accept unauthorized returns of used systems, nor can we accept returns of systems filled with an ink that the customer later decides does not meet their specific needs. You are encouraged to take all steps necessary to verify that Lyson inks will produce a satisfactory result before installing this CIS. If in doubt, ask for a print sample from your supplier.

INSTALLATION INSTRUCTIONS AND USER GUIDE

Thank you for purchasing a Lyson bulk ink feed system. You have just taken the first step to enjoying the cost saving and superior performance benefits of using Lyson bulk ink. Lyson bulk ink feed systems are simple to install, easy to use and will provide you with many hours of trouble free and lower cost printing. However, the successful use of the system is dependent on how accurately you follow this guide during installation. Please read these instructions and familiarise yourself with the system components before you start the installation. During installation, it is wise to avoid touching the chips fitted to the cartridges. Please also remember that you are now about to start working with bulk ink instead of sealed cartridges. During installation, protect the area around your printer in case of ink spillage and wear the disposable gloves included with the kit. Have a roll of paper towel handy. Remember, accidents can happen!

SYSTEM COMPONENTS

1. Bulk ink feed system.
2. Puncture tool.
3. Rubber lid bumpers (2).
4. Alcohol swabs (2).
5. Air filters (7).
6. Disposable gloves (2).
7. Suction syringes (7).
8. Instruction CD.
9. Filling funnels (not shown and only supplied with certain systems).



STEP 1

Before starting the installation, print a good nozzle check print using the existing inks installed on your printer. Write the date on the print and keep it. No warranty claim regarding the bulk ink feed system will be accepted unless it is supported by a good nozzle check print produced before the system was installed. The utility for producing a nozzle check print can be found under the 'Maintenance' or 'Utilities' tab of the Epson print driver software supplied with your printer. A good nozzle check print should like this:-

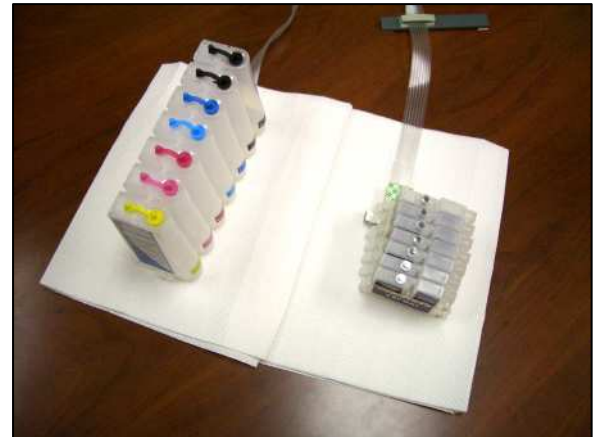


STEP 2

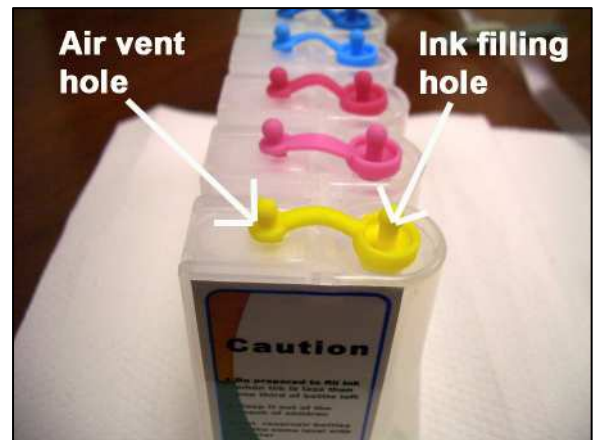
Ensure that you are using genuine Epson inks before proceeding further. We cannot guarantee compatibility between Lyson inks and other third party ink sets.

STEP 3

Lay out the bulk ink feed system on a flat surface near to your printer. Keep the rubber band around the cartridges as this will help you keep them together. Put some paper towel underneath the cartridges and reservoirs. Visually inspect the tubing to make sure it is not kinked or has been damaged during transit. Look underneath the ink reservoirs to make sure that all the tubes are connected to a reservoir.



Familiarise yourself with the two holes and the rubber bungs on the top of each reservoir. The larger hole is the ink filling hole and the smaller hole is the air vent hole. Remove all the bungs from the ink filling holes but keep the bungs inserted into the air vent holes



Fill the reservoirs with ink. Use the funnels (use a separate, clean funnel for each ink). Be careful to ensure that you fill each reservoir with the correct colour ink. Fill the reservoirs to about 1/2" from the top. If you used filling funnels then rinse the funnels clean with water, dry and keep safe for use later when you need to refill a reservoir. After you have filled all the reservoirs, insert the rubber bungs back in the ink filling holes and remove the bungs from all the air vent holes.



STEP 4

Turn over the cartridges so that the ink exit holes are upwards. Take the puncture tool and gently pierce a hole in the center of the clear film over the ink exit on the right hand (black) cartridge. Do not push the puncture tool into the cartridge – just use it to make a small hole in the middle of the clear film. Put the puncture tool away somewhere safe in case you need it again in the future.

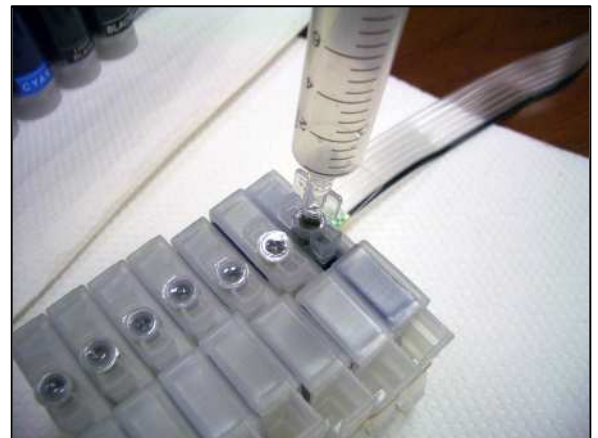


Take one of the suction syringes and make sure that it has an end adapter firmly fitted to the tip. This picture shows a syringe with the end adapter fitted. Some end adapters are right-angled. If so then hold the syringe at right angles to the cartridge.



STEP 5

Take a suction syringe and gently push the end adapter (with no needle attached) through the pierced film at the ink exit hole and into the cartridge about $\frac{1}{4}$ " or as far as it will go. The picture below shows what the syringe and straight adapter look like when inserted into the cartridge. Pull up slowly on the syringe plunger and you should see black ink travel along the tube from the reservoir and into the cartridge. If you feel that there is a lot of resistance then angle the syringe very slightly to one side. If ink has not entered the bottom of the syringe by the time the syringe plunger has reached the limit of its travel, then remove the syringe and adapter from the cartridge, push down the plunger, re-insert the syringe and adapter into the cartridge, and pull up on the plunger again. You may need to extract two or three syringe's full of air before the cartridge is full. As soon as ink enters the bottom of the syringe, stop pulling and remove the syringe and adapter from the cartridge. Any ink in the syringe can be squirted back into the corresponding ink reservoir through the ink filling hole. Rinse out the syringe and adapter with water and keep safe in case it is needed again.



STEP 6

Fill the remaining six cartridges with ink by repeating steps 4 and 5 with each of the ink exit holes in order. Use a new syringe and end adapter for each ink. When the cartridges are upside down and facing you like in the picture above, the ink colours reading from left to right are yellow, light magenta, magenta, light cyan, cyan, light black and black.

Take an air filter and push it firmly into the air hole on top of each of the reservoirs. The air hole bungs can be left just resting beside the air filter, as in this picture.



When you have filled all the cartridges and inserted all the air filters into the air holes, place the reservoirs at the right hand end of your printer, as in this picture. This is how the reservoirs should be when you are printing – with air filters in all the air holes and the bungs in the ink filling holes.



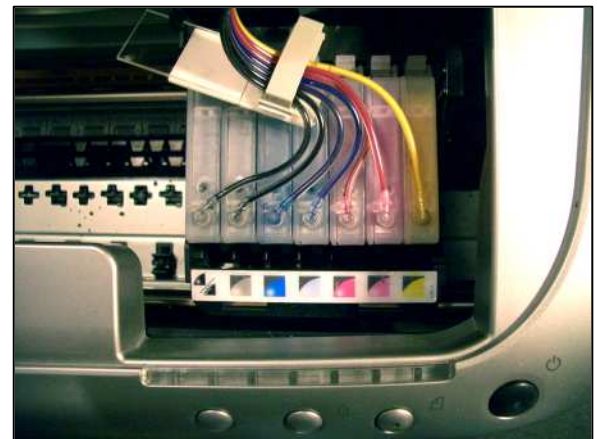
STEP 7

Press the change cartridge button on your printer. This will make the print head move to the cartridge change position. Pull the printer's power lead from the wall socket (do not turn off the printer first with the normal on/off button. Don't worry; this will not damage your machine). The print head should be now be free to move easily by hand. Lift the cartridge lid and remove the existing cartridges.

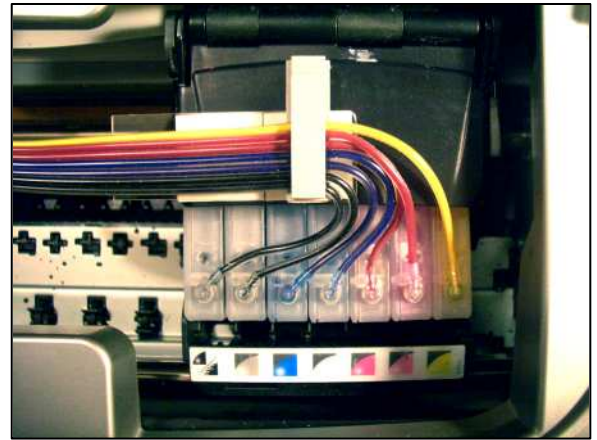


STEP 8

Take the reservoirs of the bulk ink feed system and place them at the right hand end of your printer. Drape the tubing across the top of the printer. Remove the rubber band from the cartridges and place the cartridges into the print head (see photo) as you would a normal set of cartridges.

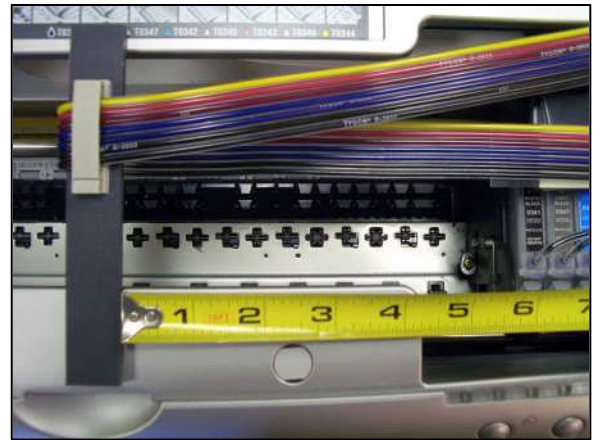


Close the cartridge bay lid and attach the head support bracket to the lid using the self adhesive pads. Before attaching, wipe the lid with an alcohol swab to remove any grease or dirt. The position of the head support bracket should be as this photo – level with the front edge of the lid and with the tube clip lined up between the cyan and light cyan cartridge.



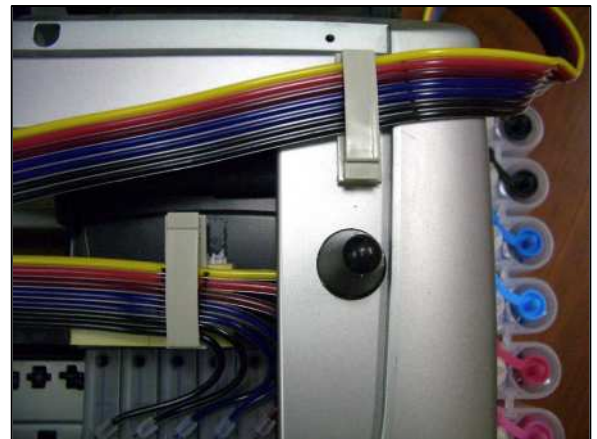
STEP 9

Locate the tube support bracket about 4.25" from the inside right edge of the top cover (see picture). Before using the self adhesive tape to attach the bracket, wipe the area where the bracket will go with one of the alcohol swabs to remove any grease or dirt.



STEP 10

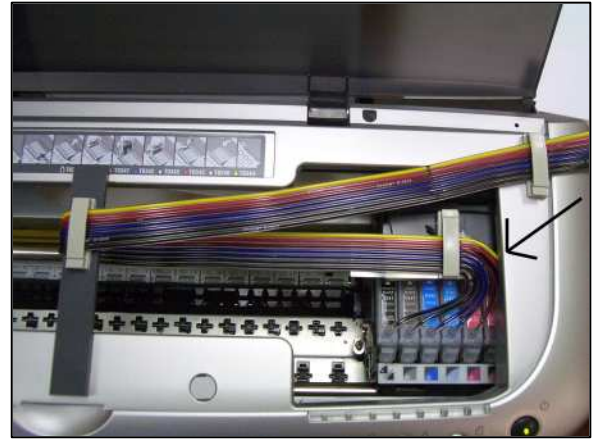
Locate the tubing clip on the right of the printer as shown in the photo. Again, wipe the area where the clip will go with an alcohol swab before using the self adhesive tape on the clip. Also, locate one of the self adhesive rubber lid bumpers just in front of the clip as in the picture. Note that the tubing has to go through the tubing clip at an angle in line with the tubing support bracket. If the tubing is not at the correct angle, you can twist it gently by hand in the clip.



Attach the other rubber lid bumper on the left hand top of the printer as in this picture.



Move the print head by hand fully to the right and left of the machine and back again to make sure that the tubing is not catching on anything. The areas to look out for are the edges on the left and right of the machine (see arrows in photos), and that the tubing is tight enough between the clip and the support bracket that it doesn't droop down and catch on the print head. Also make sure that the tubing between the print head and the support bracket is long enough to allow full movement of the print head across the entire width of the machine, but not so loose that it can fold back on itself. If you need to adjust the tubing, the tubing clips can be opened by squeezing the tab at the front of each clip.



When you are satisfied that the tubing is located correctly and not catching anywhere, plug the power back into the outlet. The print head will move to the left and then back to the right a few times. When it has finished moving, perform a nozzle check print to double check that the tubing is not catching.



The installation is now complete and your printer should look like the photo below. Perform nozzle check prints and cleaning cycles until you get a good nozzle check. You are now ready to start printing!





USER GUIDE

The use of a Lyson bulk ink feed system is very simple as long as you remember five important points:-

1. Before switching your printer on to start printing, make sure that all the reservoirs have air filters in each of the air holes, and that the ink filling holes have the rubber bungs inserted.
2. Top up the reservoirs regularly with ink, and try and keep all the ink levels at the same height with each other. Be aware that certain colours will be used more quickly than others depending on what type of printing you do. For instance, the black ink will be used quicker than the other colours if you print a lot of text. Or, if you print mainly photos, then the cyan and magenta will run down first. Never let the ink levels drop below one third full and don't fill higher than ½" from the top.
3. The ink level monitor on your computer will still work and show the ink levels dropping in the cartridges. Don't worry as this is normal. When an ink colour shows low or empty, simply stop printing, switch off your printer, wait 10 seconds and then switch your printer back on. This will reset the ink level to full on your computer. You may also get the occasional warning on your computer screen to tell you that you are not using Epson original inks. Just confirm that you are happy to continue and the warning will go away.
4. Always stand the reservoirs on the same surface as the printer (level with the bottom of the printer). **Do not lift up the reservoirs** – this will not help ink flow and could cause the reservoirs to siphon all the ink out into the printer.
5. Always try and use your printer at least once every few days, even if you only print one small colour print. This will keep the ink fresh in the printer's print heads and reduce the chance of clogging or drying out of the inks. If you can't use your printer every day or so (if you go away), then a good tip is to buy a simple plug in timer like you would use to switch a lamp or Christmas tree light on and off. Connect your printer's power lead through the timer, leave the power on/off button on the printer depressed or in the 'on' position, and set the timer to come on for 30 minutes or so each day. This will turn the printer on each day and it will perform a little head clean and keep the ink fresh in the print head jets. Although this uses a little ink each time, it will be far less than performing multiple cleaning cycles when you return.

Apart from these five points, you should use your printer just as you would with normal cartridges, As long as you follow these simple guidelines, you will enjoy trouble free and cost saving printing.

TROUBLE SHOOTING GUIDE

Problem	Things to do/check
Consistent banding present in prints.	<ol style="list-style-type: none"><li data-bbox="753 258 1495 394">1. Check that the reservoirs all have air filters in the air holes. Check that the tissue inside the filters does not have dried ink on the surface. If it does, contact your dealer for a replacement filter.<li data-bbox="753 401 1516 468">2. Check that the ink levels in the reservoirs have not fallen below one third full. Refill as necessary.<li data-bbox="753 474 1474 541">3. Check to make sure that no tubes are kinked or damaged.<li data-bbox="753 548 1500 722">4. Perform a nozzle check print to see if any jets are missing or clogged. If so, then perform head cleaning cycles and nozzle check prints until you get a good print. Remember to leave 15 minutes after a clean before performing a nozzle check.<li data-bbox="753 728 1523 865">5. If head cleaning doesn't cure the problem then remove the cartridges from the printer and re-prime the cartridges using a suction syringe with an end adapter fitted, as in this picture. <li data-bbox="753 1310 1463 1409">6. With cartridges upside down, insert the end adapter into the ink exit hole about 1/4" as in the picture below. <li data-bbox="753 1845 1511 1984">7. Pull up on the syringe plunger until you get a good flow of ink entering the bottom of the syringe (you may get some air bubbles at first). Remove the syringe and adapter from the cartridge and squirt

	<p>any ink in the syringe back into the relevant reservoir through the ink filling hole. Rinse out the syringe and end adapter with water until it is clean. Re-prime the other cartridges by using the same method. Make sure you thoroughly clean out the syringe and end adapter with water between colours. Re-install the cartridges and perform head cleanings and nozzle checks until you get a good print.</p>
<p>Ink blobs dropping on prints.</p>	<ol style="list-style-type: none"> 1. Check that all the reservoirs have air filters installed in the air holes. 2. Check that the ink levels in the reservoirs have not been filled higher than ½” from top of the reservoirs.
<p>An ink reservoir is accidentally allowed to run dry.</p>	<ol style="list-style-type: none"> 1. Refill the reservoir with new ink. 2. Remove the relevant cartridge from the printer and re-prime the cartridge using a suction syringe and end adapter as in section one of this trouble shooting guide.
<p>Prints appear to be the wrong colour.</p>	<ol style="list-style-type: none"> 1. Perform a nozzle check print to make sure all the jets are firing correctly. If jets are missing then perform head cleaning cycles and nozzle check prints until a good print is obtained. 2. Check to see if you are using the correct printer profile. Some Lyson inks require that an ICC colour profile is used during printing to correct colour shifts. Many free profiles along with user guides are available for down load at www.lyson.com or from your local dealer. 3. Check to make sure that you have filled the reservoirs with the correct colour ink.
<p>You need to leave your printer unused for a period longer than four weeks (two weeks in regions of high temperature and/or low humidity), or you want to remove the bulk ink feed system from your printer for an extended time.</p>	<ol style="list-style-type: none"> 1. Remove all the air filters from the tops of the reservoirs and insert the rubber bungs into the air holes to seal the reservoirs. 2. Remove the cartridges from the printer and place them in a plastic bag with the ink exit holes upwards. 3. Open the tube clips by squeezing the small tab at the front of each clip. The entire system can now be removed from the printer for storage 4. Flush the printer with Lyson cleaning cartridges available from your local Lyson supplier. 5. To re-install your system, follow the installation guide from the beginning again except that the tube support bracket and clips will already be attached to your printer.

Technical Support

If you have any issues installing this product or with day-to-day operation then contact your supplier first. They will be familiar with both you and the system and should be able to solve any problem quickly.

In the event that your dealer is not able to help then email:

TechnicalServiceUK@nazdar.com

Colour Management

Refer to the CD supplied with the Lyson CIS system. The CD contains a wide variety of printer profiles and instruction pdf documents which are supplied with our complements. It is important to use the right profile for the right ink/paper combination. If you are using a paper which does not have an associated profile included on the CD then contact your dealer for advice.

To take advantage of a custom profile offer from your dealer, consult the pdf: **“2100 Fotonic Custom Profiling”** or **“2100 PhotoChrome Custom Profiling”**
These documents are on the CD that accompanied the CIS system.

