



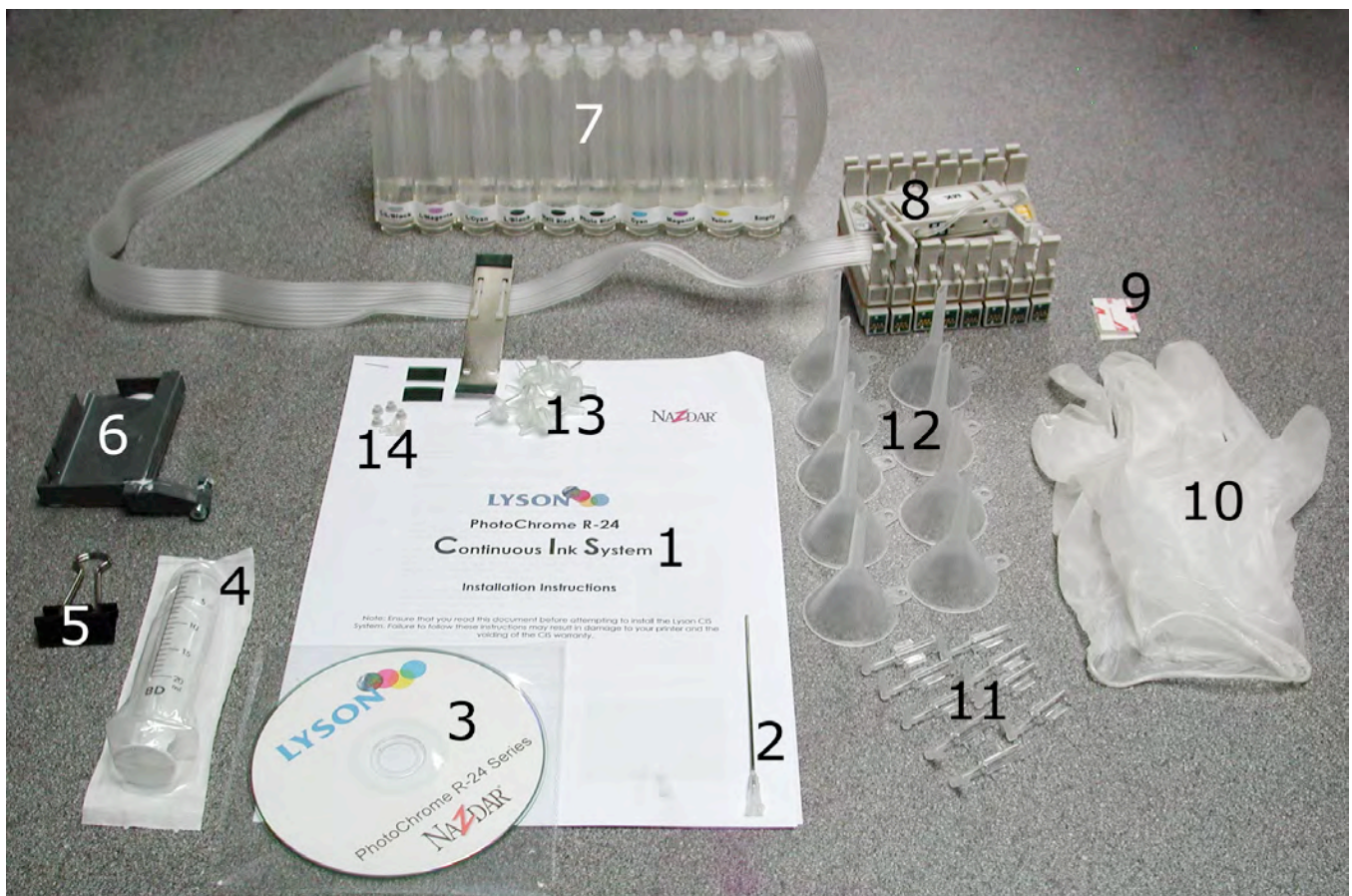
**PhotoChrome R-24**  
**Continuous Ink System**

**Installation Instructions**

Note: Ensure that you read this document before attempting to install the Lyson CIS System. Failure to follow these instructions may result in damage to your printer and the voiding of the CIS warranty.

## Please Read Carefully.

1. If you are installing the Lyson CIS system onto a brand new printer you should install the Epson cartridges first in order to ensure that the printer is in good working order. Never install the Lyson CIS system onto a printer that has not been checked out first with the original cartridges. Once you have determined that the printer is functioning correctly then print a nozzle check pattern, date it, and keep it safe. This print may be needed in order to validate your warranty in case of issues later. You can now prepare to install the Lyson CIS system.
2. Read the instructions through completely, including the notes at the end of this document, before beginning the installation.
3. Unpack all the items from the box. Identify the following items:



1. Instruction manual.
2. Extra long syringe needle. For use when draining the CIS for transport.
3. Instruction CD containing printer profiles.
4. Syringe, used for priming the CIS system.
5. Bulldog clip. When transporting the system bend the ink lines back on themselves and use the bulldog clip to secure in place.
6. Cradle for storing unused black cartridge.
7. Ink tanks.
8. CIS cartridges.
9. Spare Velcro. This is used to secure the tubing to the printer after installation. The ink tanks have a long strip of Velcro already attached in order to secure them at the correct height.
10. Gloves. Installing the CIS is a clean process but the wearing of gloves is recommended.
11. Angled adaptors. These attach on to the syringe provided so that the CIS cartridges can be primed properly.
12. Funnels, used to help fill the ink tanks.
13. Breather valves for the ink tanks, these enable air to flow in to the system whilst protecting the inks from dust.
14. A collection of spares including replacement rubber seals which connect the ink tubes to the cartridges and to the ink tank, and extra self-adhesive feet for the ink line support bracket.

4. Remove the small bungs located in the top of the ink bottles. Place the breather caps next to the containers but do not insert them yet. The breather caps look like small spinning tops and the thicker end should be inserted into the ink tank.

5. Carefully pull out the large ring-pull bungs from the ink containers by grasping the rubber handle and pulling gently. Do not remove the bung from the final chamber, labeled "Do Not Use".

6. Insert one of the funnels into the hole at a slight angle, ensuring that a seal is not created between the side of the funnel and the ink tank. It is important that air can get into the tank around the funnel whilst pouring ink into the reservoir, otherwise the ink will not travel properly through the funnel.



7. Carefully pour the correct ink through the funnel to a level just below the top of the container. Move onto the other colours and repeat the process. Once all the containers are full, insert the breather caps.

8. Switch the printer on and move the cartridges to the cartridge change position by pressing the ink button (2<sup>nd</sup> from the top). Open and remove the cartridge cover. Remove the Epson cartridges (there is no need to throw these away as they can be re-installed at a later date if necessary). Using the small screwdriver included in your CIS box insert it between the lug on the left hand side of the cartridge cover and the hole it fits into, twist it slightly and the cover will release easily.

9. Without switching the printer off, remove the mains lead from the back of the printer. You are now able to freely move the cartridge carrier. Move the carrier towards the left hand side of the printer.

10. Feed the Lyson CIS cartridges (from the left) under the bar on the left hand side of the cartridge area and bring them out over the front of the printer. (The picture shows the cartridges after they have been filled with ink.) The tube bracket on your system may differ from that shown in the picture.



11. Move the cartridge carrier back to the change position and insert the cartridges. This will pierce the membrane on the underside of the cartridges ensuring they are pierced in the exact centre. Remember to insert the 9<sup>th</sup> spare cartridge as well.

12. Remove the cartridges from the printer and place them on a flat surface (table) with the nozzles uppermost. It is recommended that you replace the elastic bands around the cartridges for stability for the ink filling stage.

13. Attach a right-angled tapered adaptor to the end of the syringe. This is designed to allow the syringe to be inserted into the cartridge without damaging the internal seal.

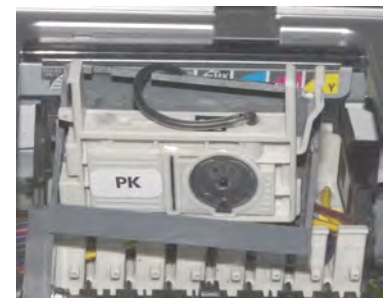


14. Insert the syringe into one of the holes you have just pierced. Withdraw the plunger slowly and hold it in the extended position. You will see the ink travel along the tube and into the cartridge. After 20-30 seconds or so you should see the ink appear in the syringe. If no ink appears after about 20 seconds, withdraw the syringe, push the plunger in, re-insert the syringe into the cartridge and withdraw the plunger an inch or so. Within a few seconds the ink will begin to flow into the syringe. Gently withdraw the syringe and rinse it under running water.
15. Replace the used angled syringe adaptor with a clean one. Repeat step 14 with the remaining cartridges.

16. Install the spare cartridge cradle. This attaches to the left hand side of the cartridge holder. Push the bolt through the hole (from the left) on the cartridge carrier and then through the hole in the supplied cradle. Apply the nylock nut. The screw is a long one, intentionally, to ensure easier handling for large hands. Your small screwdriver and a pair of small pliers (to hold the nut) will be required.

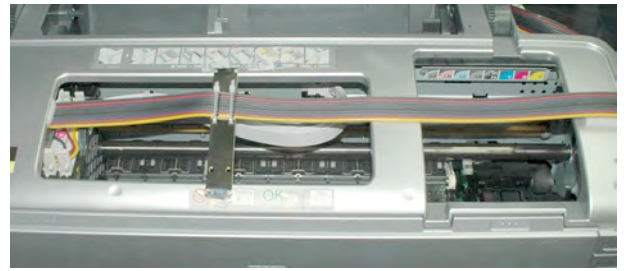
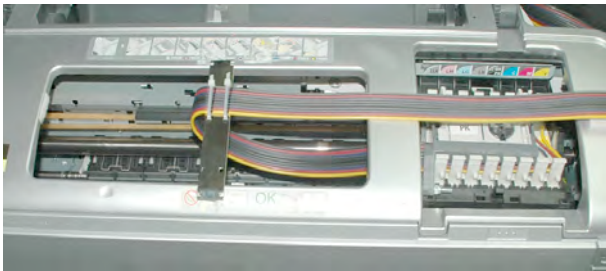


17. Once the cradle is in place you can install the cartridges. Ensure the cartridge carrier is in the cartridge change position, remove the elastic bands from the around the Lyson cartridges and insert them into the cartridge carrier. You now need to decide on which black; photo or matt, that you wish to install. When the 8 cartridges are installed the 9<sup>th</sup> can then be put into the cradle. Note the way the spare cartridge fits into the cradle, see picture below left and below centre. The ink label (PK/MK) is uppermost so you can identify which cartridge is in place and the chip end of the cartridge is at the right. The tube leading from the cartridge feeds left and through the niche in the top edge of the cradle as shown in the picture below right.



18. Carefully lower the cradle down so that it sits flat on top of the other cartridges. Pay special attention to the ink tubes below the cradle, ensure that they are not squashed or crimped in any way. Also check by the cradle hinge where the ink tubes leave the left hand side of the head assembly. You will see that the plastic of the cradle rests on top of the tubes. Once again, ensure that the tubes are not restricted in any way.
19. Push the cartridges to the left hand side of the printer as far as they will go. Position the metal bar attached to the tubes (ink line support bracket) across the gap of the printer body. Using the diagrams on the back of the printer body as a guide the bar should fit on or about the 5<sup>th</sup> diagram from the right. Ensure that the carriage is able to travel to and from both ends of the printer. There should be little or no slack in the tubes when the cartridges are at the left hand side of the printer. However, the tubes should not be too taut. Manually check the travel in both directions before sticking the bar firmly in place. It is vital that the tubes do not touch the bottom the printer during

their travel otherwise they will eventually wear through. The diagrams below show the system in place with the cartridges at rest and at full stretch.



20. The ink bottles should be located at the right hand side of the printer. You can use the large Velcro strip included to attach the ink tank to the side of the printer aligning the bottom the ink tank with the recess. Once the Velcro is in place it is recommended that you immediately separate the ink tank from the side of the printer and firmly press the Velcro down to both printer and ink tank to ensure it is firmly in place. Then re-attach the ink tank.

21. The small pieces of Velcro can be used to fasten the tubes to the printer at the right hand side and ensure that they can be undone easily and moved out of the way when you wish to change black cartridges.

22. Once you are content with the travel of the cartridge carrier and the position of the bar holding the tubes you can reconnect the mains lead.

23. Carry out a nozzle check and, if necessary, head clean to start the ink flowing. You may find that 2 or 3 head cleans will be necessary to get the ink flowing freely. You should not do head cleans in more than series of 3. If after 3 nozzle checks/head cleans you do not have a solid pattern leave the printer to settle for half an hour or so then repeat the nozzle check /head clean process.



## Notes

1. Please take note that you are dealing with a liquid. Accidents and spillages are possible if care is not taken in handling this product. The tubes fit into the bottom of the ink tank via a small hard plastic 'elbow'. While we are confident that this system is safe it is possible that this link could fail causing a leakage. Therefore it is recommended that you place a small tray underneath the tank – just in case. Nazdar accepts no responsibility for any spillage or leakage that may occur.
2. When you have used the funnels and angled adaptors, rinse them with boiled water and allow them to dry naturally. They can then be re-used when the ink containers need refilling or cartridges need re-priming.
3. During operation it is normal for the tubes to “tap” against the plastic of the printer casing as the print heads moves back and forth. The printer lid can be lowered during printing in order to reduce this sound.
4. The status monitor will work as normal. When it gets to the point where a regular cartridge should be changed the ink light will flash. Press the ink button and the cartridge carrier will move to the cartridge change position. Press the ink button again and the chip will be recharged. The procedure can be carried out if a cartridge ‘runs out’ in the middle of a long print run.

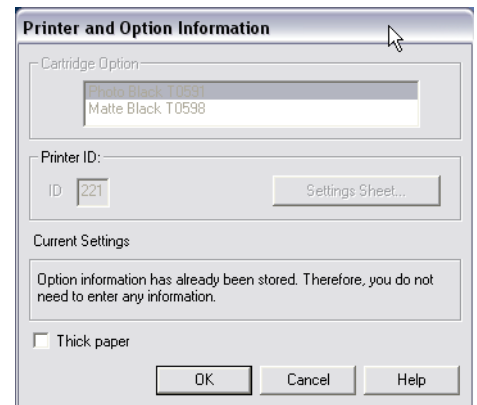
5. IMPORTANT. THE INK TANK MUST BE AT THE RECOMMENDED HEIGHT IN RELATION TO THE PRINTER. IF YOU PLACE IT HIGHER THAN THIS LEVEL YOU MAY CAUSE FLOODING. IF YOU PLACE IT LOWER THAN THE PRINTER THEN NOZZLE FAILURE MAY OCCUR.

### **Changing PK & MK Cartridges**

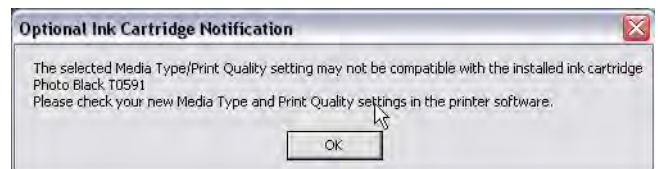
When changing cartridges (PK & MK) it is recommended that you always carry out a nozzle check to ensure that all nozzles are firing correctly. Usually you will find that the nozzle check is good but, if not, it gives you the opportunity to do a head clean without wasting a full piece of photo quality inkjet paper.

Additionally, we recommend that once you have completed the nozzle check and, if necessary a head clean, that you click the Printer Option and Information Tab at the bottom of the Maintenance Tab of the Printing Preferences. This will show both the Photo Black and Matte Black options listed with the cartridge you have just changed to as selected, as shown below. Note that this process is only available with PC drivers. The option is not available on the Mac system.

The picture shows that the Photo Black cartridge is now in place. Click OK.



When you click OK the dialog box shown at the right will appear. Click OK.



If you do not carry out the above procedure you will find that the first time you print with the new black cartridge in place the dialog box immediately above will appear once you press the final Print button and you will be directed back to the Properties dialog box. When you go through the process again the cartridge will be recognized. Visiting the Printer and Option information immediately after doing a nozzle check ensures the new cartridge is recognized immediately.

## Technical Support

If you have any issues installing this product or with day-to-day operation then contact your supplier first. They will be the familiar with both you and the system and should be able to solve any problem quickly.

In the event that your dealer is not able to help then email:

[TechnicalServiceUK@nazdar.com](mailto:TechnicalServiceUK@nazdar.com)

## Warranty

This Lyson CIS System is warranted for the period of 3 months from date of purchase. Ensure that you retain any sales documentation or receipt in case a warranty claim is required. We advise that you keep this with your Epson ink nozzle check pattern that you will have printed before installation. This is the limit of our liability.

## Colour Management

Refer to the CD supplied with the Lyson CIS system. The CD contains a wide variety of printer profiles which are supplied with our complements. It is important to use the right profile for the right ink/paper combination. If you are using a paper which does not have an associated profile included on the CD then contact your dealer for advice.

The use of generic printer profiles is explained in:

**“How to use Lyson profiles”** pdf document (step 2)

Additional help in producing black and white prints without profiles is given in:

**“Black and White Printing”** pdf document (step 3)

The use of printer profiles at a operating system level, to enable colour accurate printing with a variety of applications, is explained in:

**“R-24 Advanced Colour Management”** pdf document.

*Caution: This document is for advanced users only. The use of generic profiles with Photoshop is comprehensively covered in the pdf “How to use Lyson profiles”*