



PhotoChrome Pro

Colour Management Instructions

Profile Installation: (PC)

Right-click on the profile which accompanied this pdf document. Select “Install Profile” from the context menu. Restart Photoshop.

Open an image in Photoshop, then follow this path to the printer driver: FILE – PAGE SETUP - PRINTER...(select your printer)...PROPERTIES. From the “MAIN” tab window select CUSTOM then ADVANCED.

Recommended Driver Settings:

For Gloss, Satin and Semi Gloss paper profiles:

Media: “Premium Lustre Photo Paper”

Color Management: Color Controls selected. Color Mode set to “Adobe RGB”, and Gamma set to “1.8” (as shown left)

For Fine Art paper profiles:

Media: “Watercolor Paper; Radiant White”

Color Management: Select “Off (No Color Management)”

For Matt paper profiles including Lyson Pro Photo Matt:

Media: “Archival Matt Paper”

Color Management: Select “Off (No Color Management)”

Resolution: Best Photo or 1440dpi for all media types.

Selecting the Profile:

Go to FILE – PRINT WITH PREVIEW. Select “Let Photoshop Handle Colors” as shown right.

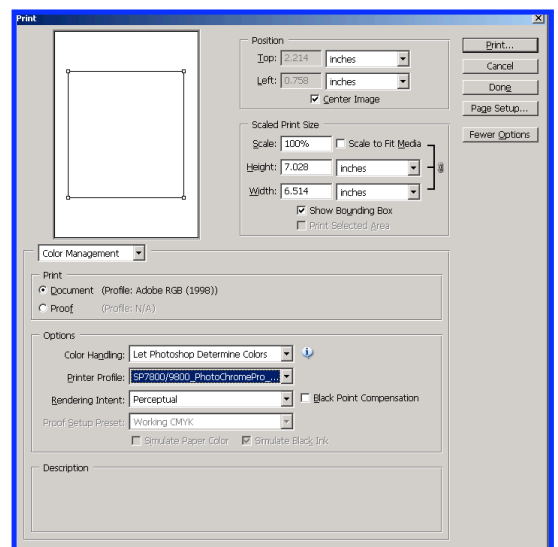
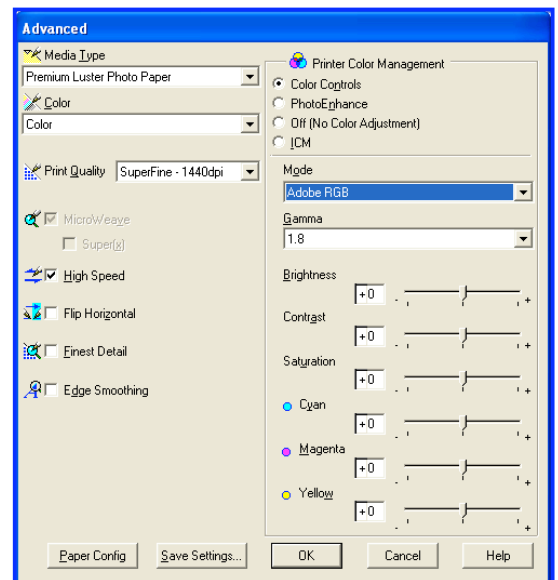
Select the desired printer profile from the drop down menu below.

The rendering intent can be left as “Perceptual.” For wide gamut reproduction on gloss and satin papers try selecting “Relative Colormetric” with “Black Point Compensation” activated.

Select “Print...” to start printing.

Note: for generic gloss profiles, any colour cast can be dialed out by adjusting the cyan, magenta and yellow sliders. For example, a warm cast can be dialed out by reducing the magenta by -2. Always ensure that you add the same sum amount to the other colours to keep the overall colour density the same. e.g., If reducing the magenta by -2 then add +1 to the yellow and cyan. Only use small adjustments and try to avoid adjusting the brightness, contrast or saturation sliders.

This technique is only possible for profiles that can be used with the colour controls activated. Fine Art and Matt profiles have been written differently to optimize the results. If you still have a colour cast with a matt or fine art profile we recommend asking your dealer about custom profiles.



Profile Installation: (Mac)

Drag and drop the profile which accompanied this pdf document to the following location:
Hard Drive / USERS / (your name) / Library / Colorsync / Profiles
Restart Photoshop.

Recommended Driver Settings:

For Gloss, Satin and Semi Gloss paper profiles:

Print Settings Menu:

Media Type: "Premium Lustre Photo Paper"

Printer Color Management Menu:

Color Controls selected. Mode set to "Adobe RGB", and Gamma set to "1.8" (as shown right)

For Fine Art paper profiles:

Print Settings Menu:

Media Type: "Watercolor Paper; Radiant White"

Printer Color Management Menu:

Select "Off (No Color Adjustment)"

For Matt paper profiles including Lyson Pro Photo Matt:

Print Settings Menu:

Media Type: "Archival Matt Paper"

Printer Color Management Menu:

Select "Off (No Color Adjustment)"

Resolution: Best Photo or 1440dpi for all media types.

Selecting the Profile:

Go to FILE – PRINT WITH PREVIEW.

Select "Let Photoshop Handle Colors" as shown right.

Select the desired printer profile from the drop down menu below.

The rendering intent can be left as "Perceptual."

For wide gamut reproduction on gloss and satin papers try selecting "Relative Colorimetric" with "Black Point Compensation" activated.

Select "Print..." to start printing.

Note: for generic gloss profiles, any colour cast can be dialed out by adjusting the cyan, magenta and yellow sliders. For example, a warm cast can be dialed out by reducing the magenta by -2. Always ensure that you add the same sum amount to the other colours to keep the overall colour density the same. e.g., If reducing the magenta by -2 then add +1 to the yellow and cyan. Only use small adjustments and try to avoid adjusting the brightness, contrast or saturation sliders. This technique is only possible for profiles that can be used with the colour controls activated. Fine Art and Matt profiles have been written differently to optimize the results. If you still have a colour cast with a matt or fine art profile we recommend asking your dealer about custom profiles.

Technical Support

If you have any issues installing this product or with day-to-day operation then contact your supplier first. They will be the familiar with both you and the system and should be able to solve any problem quickly.

In the event that your dealer is not able to help then email:

TechnicalServiceUK@nazdar.com

