



# PhotoChrome R-38 Refillable Cartridge System (RCS)

## Operating Instructions

### How to use Lyson Printer Profiles

Lyson PhotoChrome R-38 is not a precise colour-match to Epson's Ultrachrome K3 Inks. This does not mean that you cannot achieve accurate and predictable colour from Adobe Photoshop or many other applications. Lyson have released a selection of 'generic' printer profiles for use with the R-38 inks and a range of recommended media. These are the profiles you will find on the CD which accompanied the RCS system. Follow the instructions below to learn how to use these generic profiles, which will help you to produce excellent colour and monochrome prints.

### PC Operating Systems:

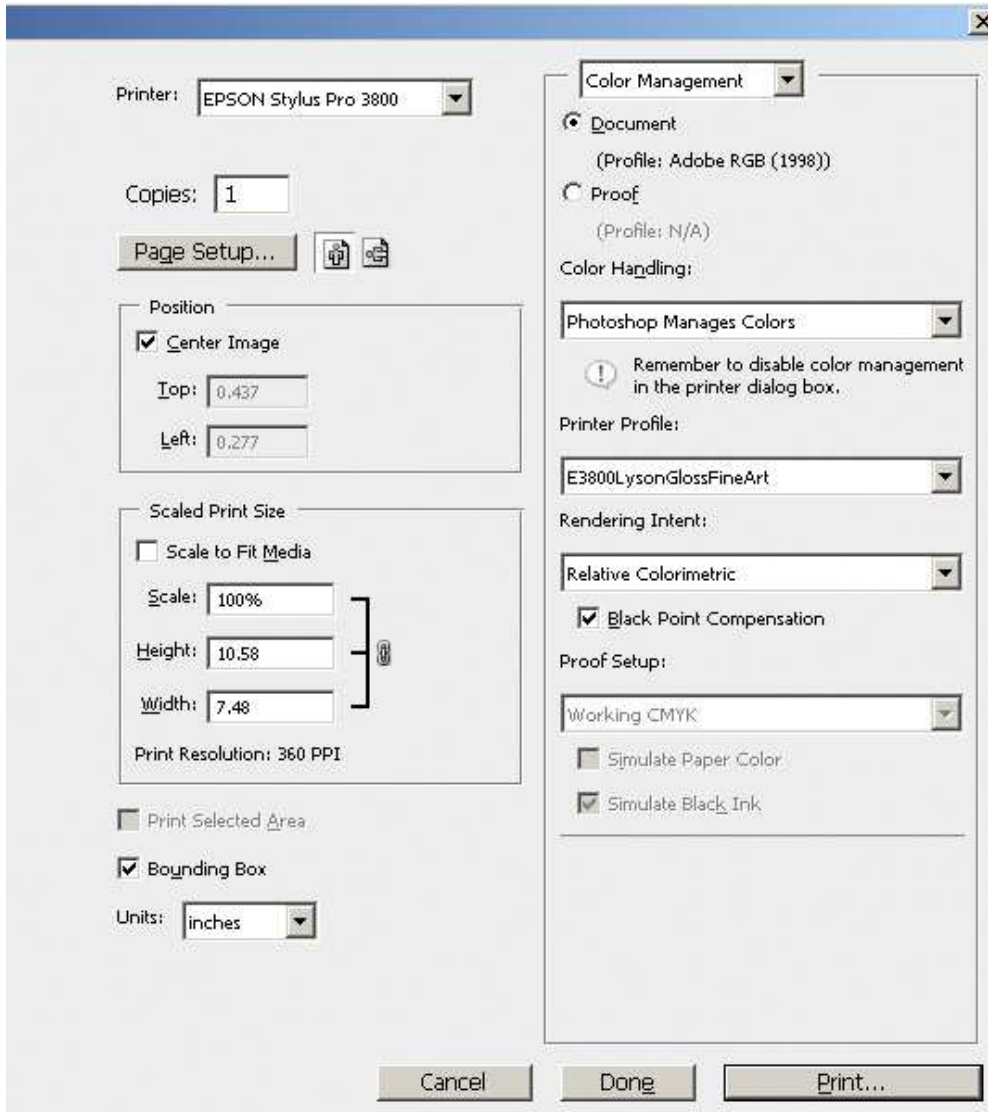
Right-click on the profiles you require on the CD and select 'install profile' from the context menu. (alternatively copy and paste the profile into the 'color' folder of your operating system). Restart Photoshop.

### Mac Operating Systems:

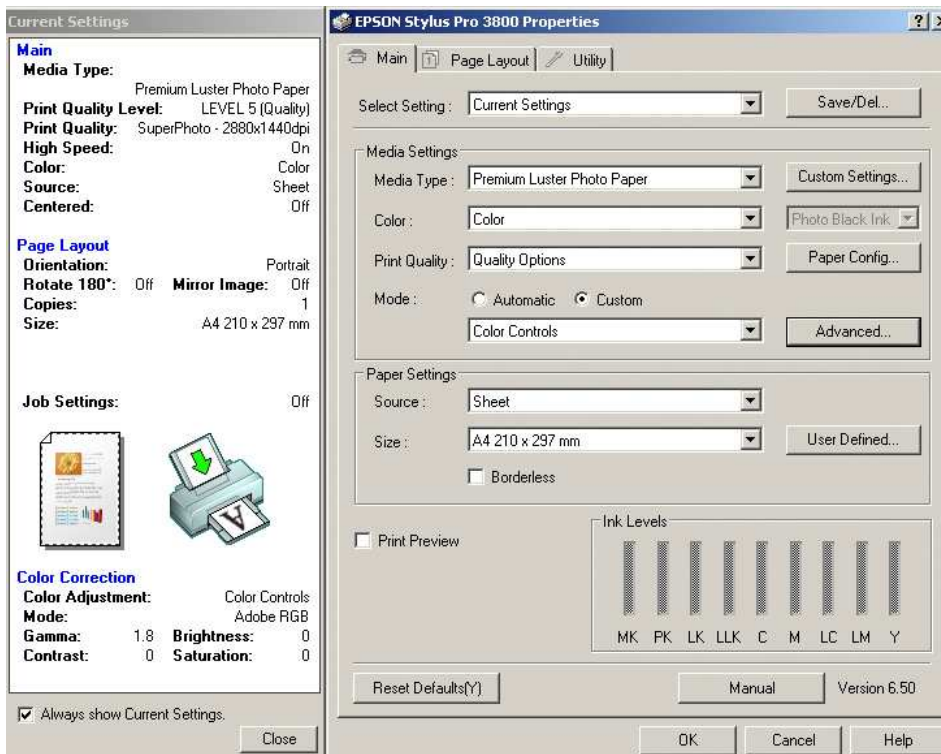
Drag and drop the profiles you require from the CD to the following location: HARD DRIVE / USERS (your name) / LIBRARY / COLORSYNC / PROFILES. Restart Photoshop.

Both PC and Mac:

1. With an image open in Photoshop, follow this path to the printer driver: Go to FILE...PAGE SETUP...Click 'Printer', then 'Properties'. From the Main Tab window select 'Advanced'. If necessary click 'OK' to proceed.
2. Selecting the Profile:  
Go to FILE – PRINT WITH PREVIEW. Select the profile as shown. Click Print.



3. The subsequent dialogue boxes appear:



3a. When you click on 'Colour Controls' > Advanced:-



4. For Gloss, Satin and Semi Gloss papers:

Select Profile – Relative – Black point compensation ticked

Media: `Premium Lustre Photo Paper – SuperPhoto 2880 x 1440dpi – High Speed `On`  
Quality Level 5 (Quality) - Adobe RGB – Gamma 1.8

5. For Matt papers:

Select Profile – Relative – Black point compensation ticked

Media: `Archival Matte Paper – 1440 DPI – High Speed `On`  
No colour Adjustment

6. For Fine Art papers:

Select Profile – Relative – Black point compensation ticked

Media: `Water Colour Radiant White Paper – 1440 DPI – High Speed `On`  
No colour Adjustment

Note: For Generic printer profiles, any noticeable colour cast can be dialed out by adjusting the cyan, magenta and yellow sliders. Ensure only small adjustments are made as they can have a dramatic effect

If you fail to achieve accurate colour and density, please contact your supplying Lyson Dealer immediately, who will fault-find your workflow.

Nazdar Worldwide Headquarters  
8501 Hedge Lane Terrace, Shawnee, KS 66227-3290 USA  
Toll Free: 866.340.3579 or Tel: 913.422.1888 Fax: 913.422.2296

Nazdar Limited  
Barton Road, Heaton Mersey, Stockport, England SK4 3EG  
Tel: + (44) 0.161.442.2111 Fax: + (44) 0.161.442.2001